

SLX Range

SLX-F1.5R & SLX-F1.5-FR

The SLX-F1.5R alongside the male counterparts SLX-M5, SLX-M10, SLX-M18 and SLX-M25, is a clip system designed to be used with Drywall and Plywood and is available in both standard and fire-rated versions. The SLX-F1.5R is ideal for commercial interior fit-outs, a wide range of architectural applications, and is suitable for both wall and ceiling panels.

The SLX-F1.5R is compatible with the SLX-F5, SLX-M10, SLX-M18 and SLX-M25 male clips, offering either a 5kg (11lb), 10kg (22lb), 18kg (40lb) or 25kg (55lb) pull out load. The SLX-M18 male clip is also available in a fire-rated version (SLX-M18-FR).

The SLX-F1.5R is designed specifically to reduce on-site installation time while ensuring long-lasting performance in demanding applications.

The SLX-F1.5R features a 360-degree adjustability function, allowing for precise positioning of panels before locking into place via a 2-stage engagement process. The adjustability allows panel adjustment of 6mm (1/4") before locking panels into place. The use of the SLX-F1.5R, alongside any of the SLX Range male clips, provides a 7mm (0.27") gap between panel and substrate.



SLX-F1.5R
FEMALE CLIP FOR DRYWALL &
PLYWOOD



SLX-F1.5R-FR
FEMALE FIRE RATED CLIP FOR DRYWALL &
PLYWOOD

USE WITH:



SLX-M5
SLX MALE CLIP 5KG
/ 11LB



SLX-M10
SLX MALE CLIP 10KG
/ 22LB



SLX-M18
SLX MALE CLIP 18KG /
40LB



SLX-M18-FR
SLX MALE CLIP 18KG /
40LB FIRE RATED



SLX-M25
SLX MALE CLIP 25KG /
55LB



CP-01ST
STANDARD RANGE
CENTRE POINT

APPLICATIONS

- Commercial fit-outs (retail and offices)
- Hospitality
- Healthcare
- Education
- Wall and ceiling panels
- Fire-rated applications

**Not suitable for glass and fibre-cement panels.*

FEATURES



Simple Installation

Designed for easy installation while also saving time and reducing re-work.



Adjustability

Features 360-degree adjustability, allowing for versatile and precise positioning of panels 6mm total (1/4") before locking into final position.



Non-Sequential Removability

Offers the advantage of non-sequential removability, allowing panels to be detached in any order for greater flexibility during maintenance and adjustments.



No Top Gap Required

Allows for the removal or replacement of the top panel without leaving a gap above it, ensuring a seamless and flush fit.



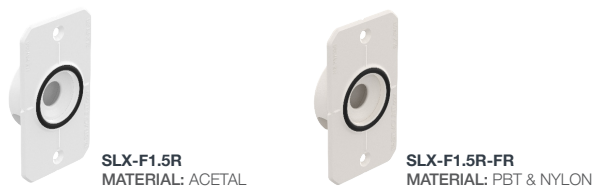
Heavy-Duty Mounting

Robust fixing, allowing for heavy panel mounting and suitable for heavy duty applications.

SLX Range

SLX-F1.5R & SLX-F1.5R-FR

TECHNICAL DATA



The following table data is based on the below models being used in conjunction with the SLX-F1.5R or SLX-F1.5R-FR.

Model	Material	Min. Pull Out Load	Min. Shear Load	Max panel weight density: Walls	Max panel weight density: Ceilings
SLX-M5	Glass Filled Nylon	5kg (11lb)	100kg (220lb)	10kg/m ² (2lb/ft ²)	8kg/m ² (2lb/ft ²)
SLX-M10	Glass Filled Nylon	10kg (22lb)	100kg (220lb)	15kg/m ² (3lb/ft ²)	10kg/m ² (2lb/ft ²)
SLX-M18	Glass Filled Nylon	18kg (40lb)	100kg (220lb)	25kg/m ² (5lb/ft ²)	25kg/m ² (5lb/ft ²)
SLX-M18-FR	Shinite	18kg (40lb)	100kg (220lb)	25kg/m ² (5lb/ft ²)	25kg/m ² (5lb/ft ²)
SLX-M25	Glass Filled Nylon	25kg (55lb)	100kg (220lb)	30kg/m ² (6lb/ft ²)	30kg/m ² (6lb/ft ²)

As an example, for a 2400mm x 1200mm (8'x4') panel, the maximum panel weights for each male clip type would be as follows:

WALLS

SLX-M5: Max weight 29kg (63lb)
SLX-M10: Max weight 43kg (95lb)
SLX-M18: Max weight 72kg (159lb)
SLX-M25: Max weight 86kg (190lb)

CEILING

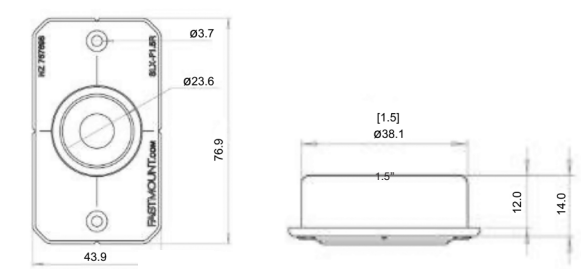
SLX-M10: Max weight 29kg (64lbs)
SLX-M18: Max weight 72kg (159lbs)
SLX-M25: Max weight 86kg (190lb)

Panel weight data is valid only if installed as per the relevant Clip Layout Guide. If you are still unsure about panel weight recommendations or would like to confirm any other details regarding panel weights, please contact info@fastmount.com. Products have been tested by a recognized international quality/assurance company. Test reports are available by request. All clips have been tested up to 500 cycles while still maintaining the minimum pull out load

PLEASE NOTE: For panels which are to be frequently removed, Fastmount does not recommend the use of the SLX-M18 or SLX-M25 male clips.

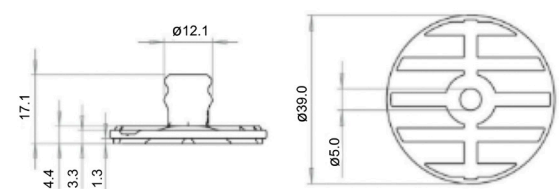
SLX-F1.5R CLIP DIMENSIONS

(Dimensions are identical for both the SLX-F1.5R and SLX-F1.5R-FR)



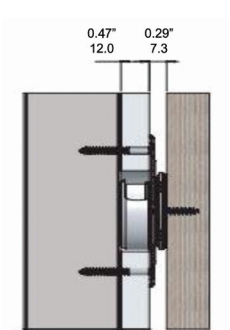
MALE CLIP DIMENSIONS

(Dimensions are identical for the SLX-M5, SLX-M10, SLX-M18, SLX-M18-FR and SLX-M25)



PANEL GAP

The use of the SLX-F1.5R alongside any of the male clips from the SLX Range, provides a 7mm (0.27") gap between panel and substrate.



ADJUSTABILITY

The SLX-F1.5R allows for a total of 6mm (1/4") adjustability before locking into the final position. This is done via a 2-stage engagement process.

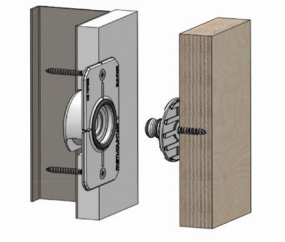
SLX Range

SLX-F1.5R & SLX-F1.5-FR

INSTALLATION OPTIONS

SLX-F1.5R & SLX-F1.5R-FR

The SLX-F1.5R is designed to be installed into drywall or plywood. With drywall the screw is to go through to the stud behind or if you miss the stud, a metal hollow wall anchor can be used.



Installed using 2x #8 25mm (1") long CSK head screws.

Male Clips

SLX-M5, SLX-M10, SLX-M18, SLX-M18-FR and SLX-M25 can either be screwed or glue mounted.



SCREW MOUNTED

All SLX Range male clips can be screwed using either 1x #8 25mm (1") or 1 x 32mm (1 1/4") screw through the center, or 3x #5 12mm (1/2") screws through the base grooves.

GLUE MOUNTED

Clips can be glued using a high quality 2-part epoxy glue.

Fastmount recommend the testing of glue with any Fastmount product first, to ensure the integrity of the hold. If unsure about which glue to use, please contact info@fastmount.com for more details.

While there are a variety of different adhesives that are suitable to use alongside the male clips, adhesives that Fastmount recommend are the Kommerling Korapur 784/5 or 3M Scotch-Weld DP100 Plus. However, it is recommended to still conduct preliminary testing to ensure compatibility.

CENTER POINTS

The CP-01ST center points can be used in conjunction with the SLX-F1.5R, and alongside any of the male clips from the SLX Range.



The center points are inserted into the SLX-F1.5R female clips. The panel is then pushed against the center points, marking the center points for the male clips, to help ensure correct alignment between female and male clip.

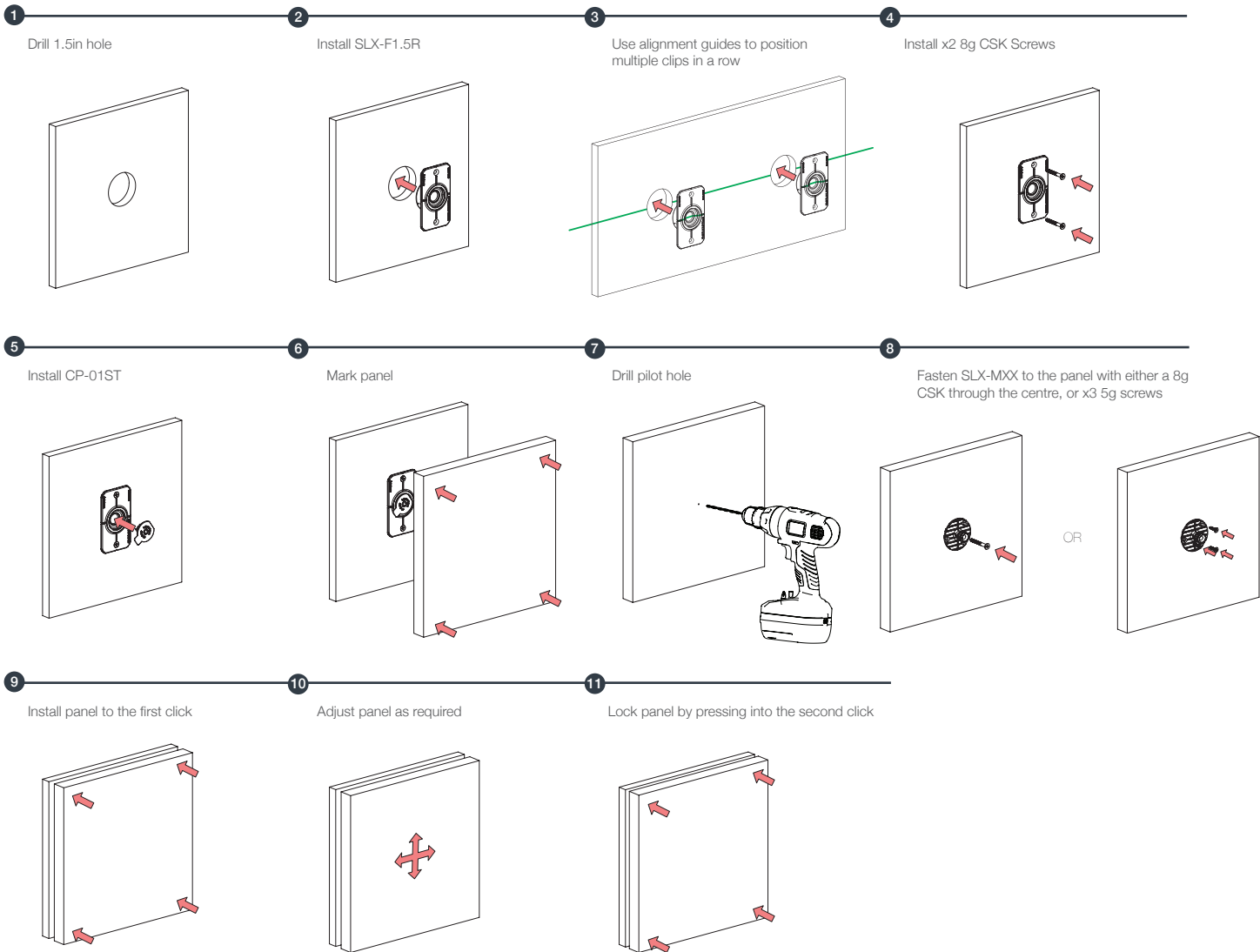
SLX Range

SLX-F1.5R & SLX-F1.5R-FR

INSTALLATION STEPS

SLX-F1.5R SCREW MOUNT

INSTALL SLX-F1.5R



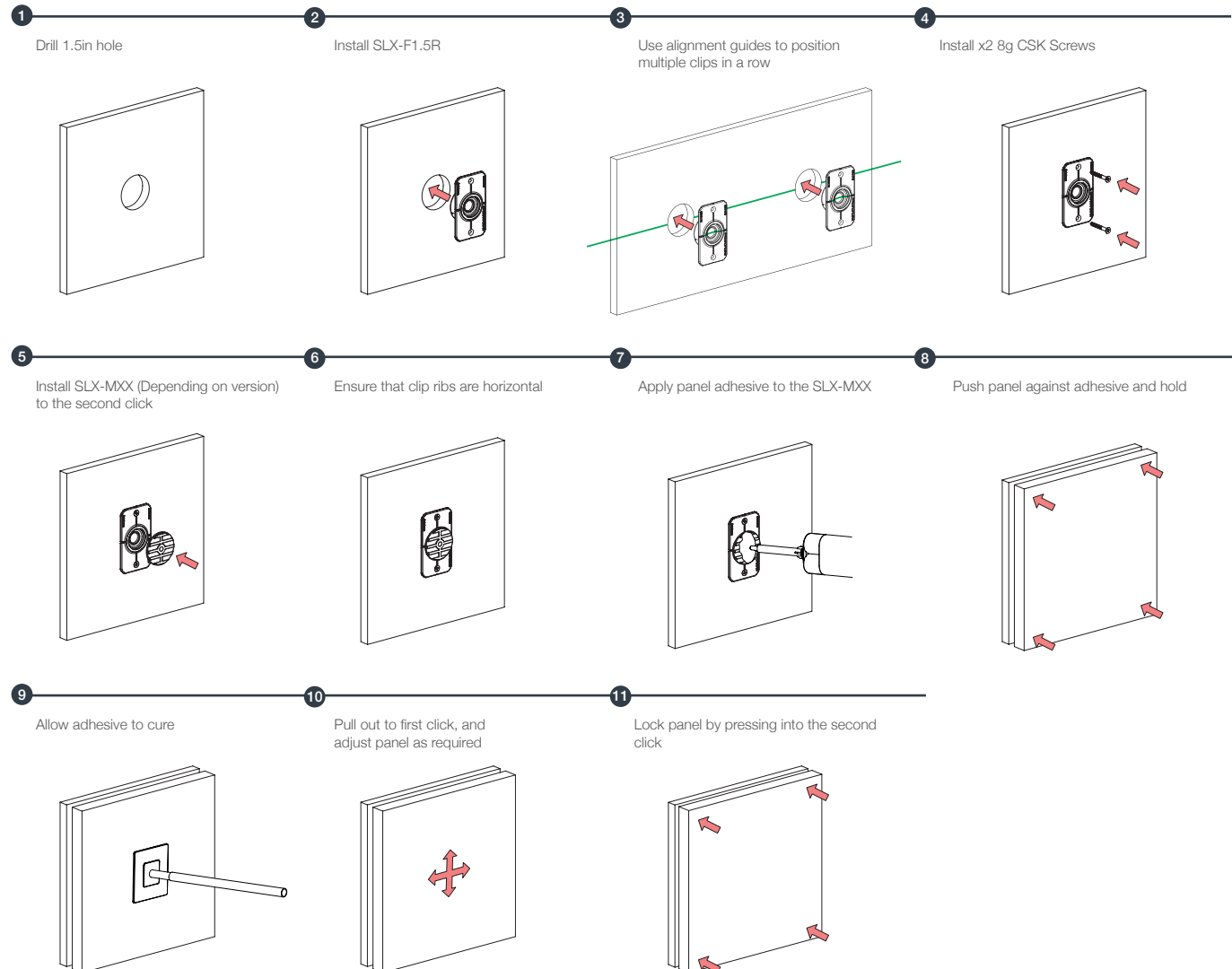
SLX Range

SLX-F1.5R & SLX-F1.5-FR

INSTALLATION STEPS

SLX-F1.5R ADHESIVE MOUNT

INSTALL SLX-F1.5R



REMOVING PANELS

Fastmount also provide panel removal tools which can help make the removal of panels easier.



CT-05
Stainless steel removal tool, for removing panels.



CT-05H
Stainless steel removal tool with fold down hook, for use with lacquered and/or textured panels.



CT-17
Suction cup sucker tool, for removing heavier panels or painted/pre-finished panels. Two required for controlled panel removal.